

# Children. & Families

PARTNERSHIP



**Bristol's Strategy for Children, Young People & Families  
2016 – 2020**

## INTRODUCTION

Bristol is one of the most vibrant, wealthy, well-educated and creative cities in the UK. There are 97,900 children and young people aged 0-18 (including 18 year olds) living in the city and we want to ensure that they are all able to take advantage of the benefits of living here. Most do, but there are some children and young people who cannot, or who need help to do so. Bristol is a city of geographical inequality and poverty. The place we are born, or the place we live, is likely to dictate our life chances, unless actions are taken to change this.

This is a shared responsibility and requires a whole city response. Strong partnership working between organisations, businesses, and communities will help target effort and limited resources. By working together and sharing expertise, experience and commitment we can ensure the best outcomes at all stages of childhood, and support the most vulnerable.

The Children and Families Partnership work with children, young people and families, across sectors. We focus on the life chances and outcomes of children from conception to 19, and in some cases up to 25. We exist to promote their health and wellbeing and to safeguard vulnerable children, young people and families.

This strategy sets out the priorities that the Children and Families Partnership have agreed as the focus of our joint work for the next four years.

## VISION

***Bristol has bold ambitions for its children and young people. All children get a good start in life, whatever their background and wherever they live. Together, the Partnership, is listening to their needs and aspirations.***

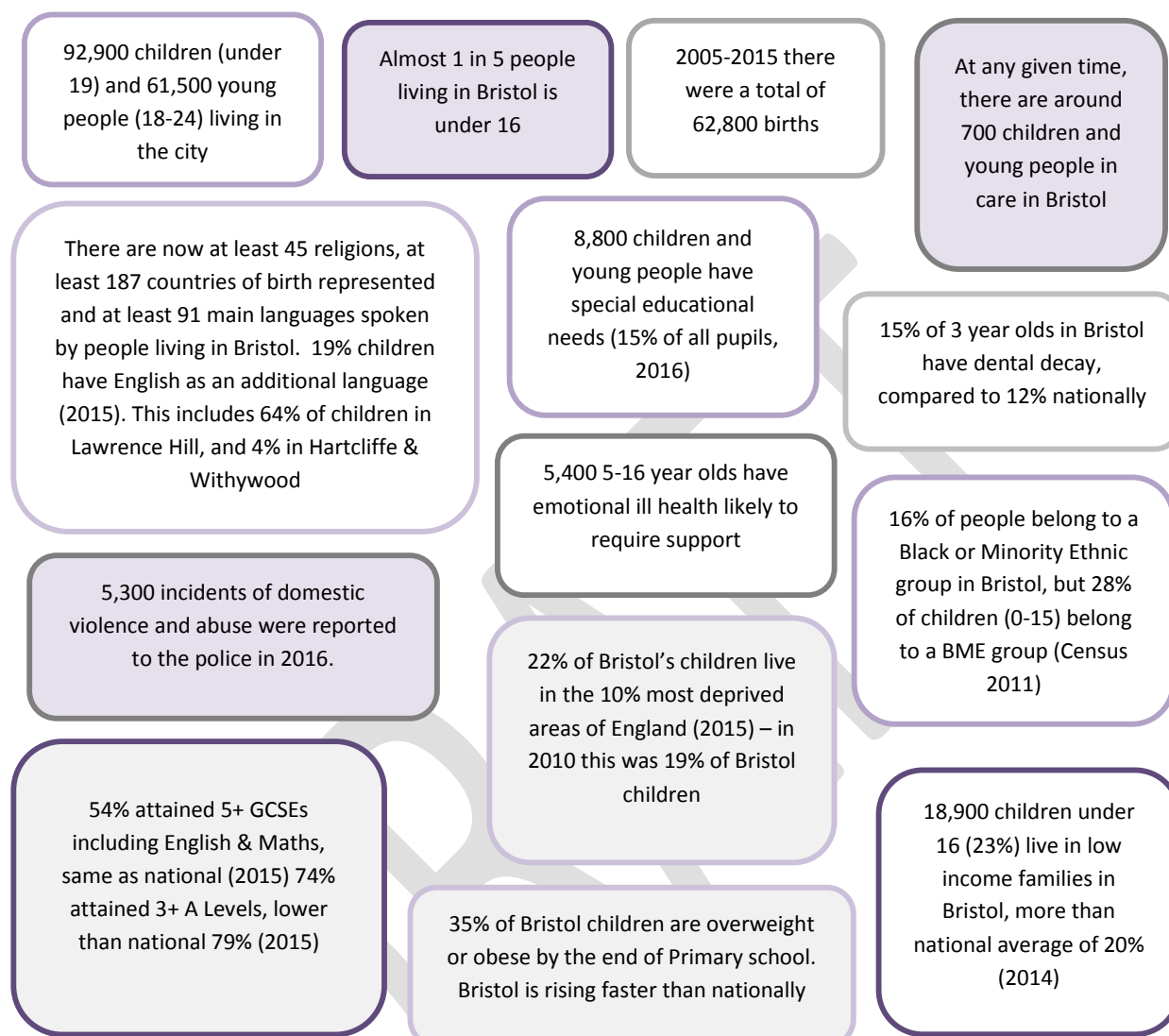
***We are investing early to prevent harm, helping families build lifelong resilience and self-reliance. All of us together, working beyond boundaries, across neighbourhoods - families, friends, communities and professionals.***

***When children and young people are at risk of harm, we act swiftly. We protect them, by listening to them and acting on their behalf to restore their rights – stability, permanence, security, education, health and wellbeing.***

***Bristol is an inclusive city that respects difference. Even the most vulnerable children and young people are participating, shaping and enriching the life of the City.***

***Whether at the start of life, or on the way through, no-one gets left behind***

## CHALLENGES AND OPPORTUNITIES



Poverty – financial, social and health deprivation – remains the leading predictor of poor life outcomes. In Bristol, **one in every four children**, live in poverty. These are the children whose life chances start or fall significantly behind that of their peers. In reality, if you walk through some of our neighbourhoods, almost **every other child** you pass is living with the effects of poverty. Elsewhere in the city, only **one in every fifty** children you see is living in poverty.

There is strong evidence that poor health is linked to social and economic disadvantage and deprivation which starts before birth and accumulates throughout life. If we are to effectively promote health and wellbeing and reduce cycles of health inequalities we need to take action before birth and across the life course.

Enabling **everyone** to have fair access to the opportunities Bristol offers, means addressing the root causes of poverty in the places where we know people are struggling, and addressing

inequality in access to the city's opportunities. We need to work in partnership with communities to change this.

Our evidence base for this strategy is the [Joint Strategic Needs Assessment](#) along with evidence from recent work and feedback from consultation.

## OUTCOMES

The Partnership is committed to working across all sectors and with local communities to find solutions that improve the life chances of children, young people and families.

The Partnership's work aims to achieve these outcomes for all children and young people:

<p><b>Safe &amp; Nurtured</b></p>	<ul style="list-style-type: none"> <li>• Have the best possible start in life; protected from abuse, neglect or harm, at home, at school and in the community, with a secure and supportive network of family or carers and friends</li> <li>• Live in a nurturing home, in a family setting, with additional help or adaptations if needed, or, where necessary in a suitable care setting</li> <li>• Live in safe and stable accommodation, free from financial exclusion, and from fear indoors and out; giving the permanence and security upon which they can build</li> </ul>
<p><b>Healthy &amp; Active</b></p>	<ul style="list-style-type: none"> <li>• Have the best physical and mental health possible, access to suitable health care and support in learning to make healthy, safe choices from the outset</li> <li>• Engage in opportunities to have fun and take part in activities, such as play, recreation and sport, which build independence and contribute to healthy growth and development at home, in education and in the community</li> </ul>
<p><b>Respected &amp; Involved</b></p>	<ul style="list-style-type: none"> <li>• Are heard and have control in decisions that affect them and the communities in which they live and learn</li> <li>• Aware of how their views, opinions and experiences have helped shape Bristol; the opportunities and services available to them, and the physical environment</li> <li>• Show respect, care and pride for other faiths communities, cultures, identities, abilities, backgrounds and experiences, and feel that their own identity, is valued by other people</li> </ul>
<p><b>Responsible &amp; Achieving</b></p>	<ul style="list-style-type: none"> <li>• Supported and inspired in lifelong learning, and in the development of skills, confidence, individuality and aspirations at home, in education, in work, in the community and beyond</li> <li>• Engage in positive opportunities and are encouraged to play active and responsible roles at home, in education and in the community</li> <li>• Benefit from fair access in education, in the community to experience of work, to employment and independence or supported living</li> </ul>

## PRIORITIES

The [strategies in place across the Children and Families Partnership](#) all play a role in ensuring that children and young people will achieve the outcomes, with the support of their families, friends and communities. However, we recognise that we need to come together to focus on the following priorities to ensure the most vulnerable children and young people are able to achieve these outcomes.

This Strategy places poverty and inequality as a key theme throughout all of the following priorities. We know [where in the city](#) children and young people are living in poverty, and with the effects of this, and we will use this data in our targeting of resources.

<p><b>1. Emotional Health and Wellbeing</b> (design – link to the Health and Wellbeing Board)                  Data Link: <a href="#">Emotional Health and Wellbeing in Bristol Needs Assessment 2015 (Children and Young People)</a></p>
<ul style="list-style-type: none"> <li>• We will promote and create positive, fun and challenging opportunities to help children and young people develop their confidence, creativity and resilience through investment in youth services and early years provision, and by promoting their engagement in physical activity and the cultural life of the city</li> <li>• We will pursue the local transformation of emotional health &amp; wellbeing services for children and young people and invest together with schools in the things we know work to ensure that every child and young person, everywhere, receives the right support, as early as possible</li> <li>• We will work with the Health and Wellbeing Board to improve health and wellbeing across the city, for parental emotional health and wellbeing in particular</li> </ul>
<p><b>2. Safe and Inclusive Communities</b> (design – link to the Safer Bristol Partnership)                  Data Link to embed:  <a href="#">Safer Bristol Crime and Disorder Strategic Assessment, January 2015</a>  <a href="#">Bristol Domestic &amp; Sexual Abuse Needs Assessment 2013</a></p>
<ul style="list-style-type: none"> <li>• We will work closely with partners including the Safer Bristol Partnership to reduce the number of young people entering the criminal justice system by focussing on intergenerational offending and preventing involvement in street conflict and anti social behaviour</li> <li>• Through joint safeguarding practices, procedures and protocols we will protect children and young people from coercion and exploitation and work to prevent bullying, harassment and discrimination</li> <li>• We will work with families where there are multiple, complex needs, particularly where children and young people have special educational needs or disabilities, are living with the effects of drug and alcohol misuse or domestic violence and abuse, or where young people have been identified as carers</li> <li>• We will continue to support the use of restorative approaches in the city and champion inclusion and diversity</li> </ul>

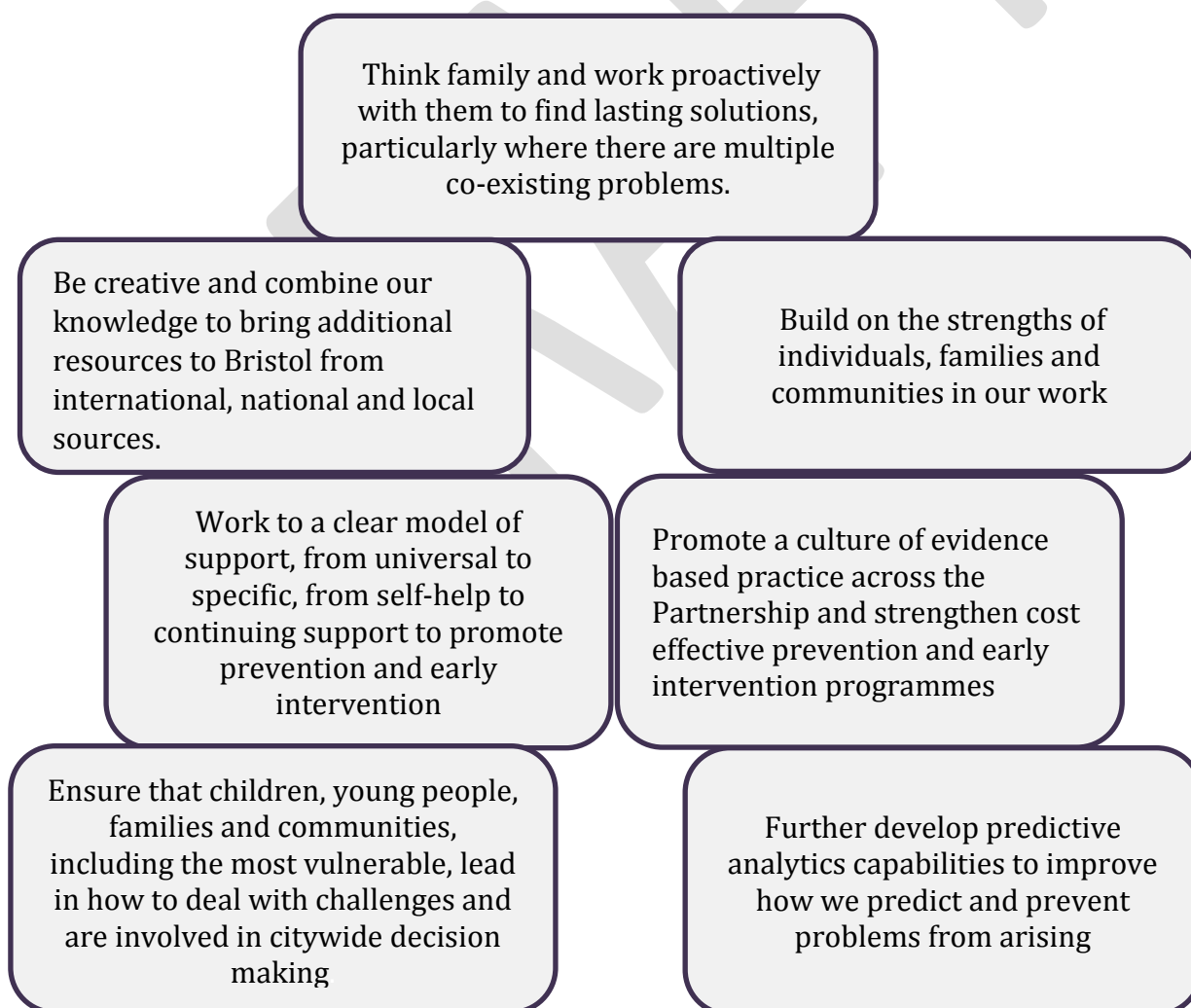
<b>3. Education, Employment &amp; Skills</b> (design – link to Learning City) <i>Awaiting link to new attainment figures</i>
<ul style="list-style-type: none"><li>• From the earliest years we will encourage children and young people to be aspirational and to develop positive attitudes to learning</li><li>• We will work with Bristol Learning City Partnership to provide clear skills development and employment pathways to provide experience of work, mentoring and in work training opportunities to help all young people make positive, informed choices that lead to interesting and inspiring careers</li><li>• We will improve learning outcomes for vulnerable groups, and provide targeted support for those most at risk of underachieving or being excluded from learning, including children with Special Educational Needs and disabilities, Children in Care, Care Leavers, young carers, BME children and young people and those at risk of becoming involved in street violence</li></ul>
<b>4. Housing</b> (design – link to Bristol Homes Board) Link to the strategy / needs assessment: <a href="https://www.bristol.gov.uk/housing/housing-strategy-and-supporting-strategies">https://www.bristol.gov.uk/housing/housing-strategy-and-supporting-strategies</a>
<ul style="list-style-type: none"><li>• We will work with the Bristol Homes Board and support the Preventing Homeless Strategy to ensure access to safe, stable, suitable or adapted and affordable housing for vulnerable families and young people including children in care and care leavers</li></ul>

## THE PARTNERSHIP AND GOVERNANCE ARRANGEMENTS

The Children and Families Partnership is one of [Bristol's City Partnerships](#). We work in partnership because addressing these issues is the responsibility of everyone who works and cares about children and young people.

The role of the Children and Families Partnership is to identify the needs of children, young people and families, and work with them to steer the whole city's response in order to give them the best possible start in life, reducing inequalities that are due to economics, education, health and disability. We join together and pool resources, targeting the right help, at the right time, to the right people to improve their life chances. It is about identifying people early, protecting them when needed, building their resilience and helping them to participate fully and independently in Bristol's economic, social and cultural life.

We are developing the following approaches that require agencies and organisations to work together effectively to support families, with a shared purpose to achieve joint outcomes. We will:



We work closely with other city Partnerships, so that we can be sure the needs of children, young people and families are at the forefront of decisions about housing, health, community safety and other important decisions across our city. You can find more about these here:

- [Health and Wellbeing Board](#)
- [Safer Bristol Partnership](#)
- [Bristol Learning City Partnership](#)
- [Bristol Safeguarding Children Board](#)
  - The Children and Families Partnership Board has a crucial relationship with the **Bristol Safeguarding Children Board** who ensures that there are robust arrangements in place across agencies to protect children and young people from harm and to promote their welfare. This includes effective information sharing. Everyone within the partnership follows agreed [policies and procedures](#).

The Children and Families Partnership Board are responsible for the delivery of this Strategy. The Board will develop annual Action Plans to deliver these priorities through the Partnership's subgroups and with other partners. These Action Plans will have clear measures so that we can check that the Strategy is making a difference.

The Action Plans, measures and relevant data are available [here](#).

